



Delivering Your Dreams...

Moroccan
series



Artistic Silhouette

600x600mm | New Addition

Carving
Collection

12+ SURFACE

100%
WATER PROOF



Moroccan

series

"Introducing Our Exquisite Moroccan Series
Unveiling Timeless Elegance and Artistry in Every Tile.
Elevate Your Spaces with the Rich Heritage of Moroccan Design.
Explore the Beauty, Embrace the Craftsmanship.

600x**600mm** | **New Addition**

www.spentagonceramic.com

BUILD your own SUCCESS STORY with Spentagon

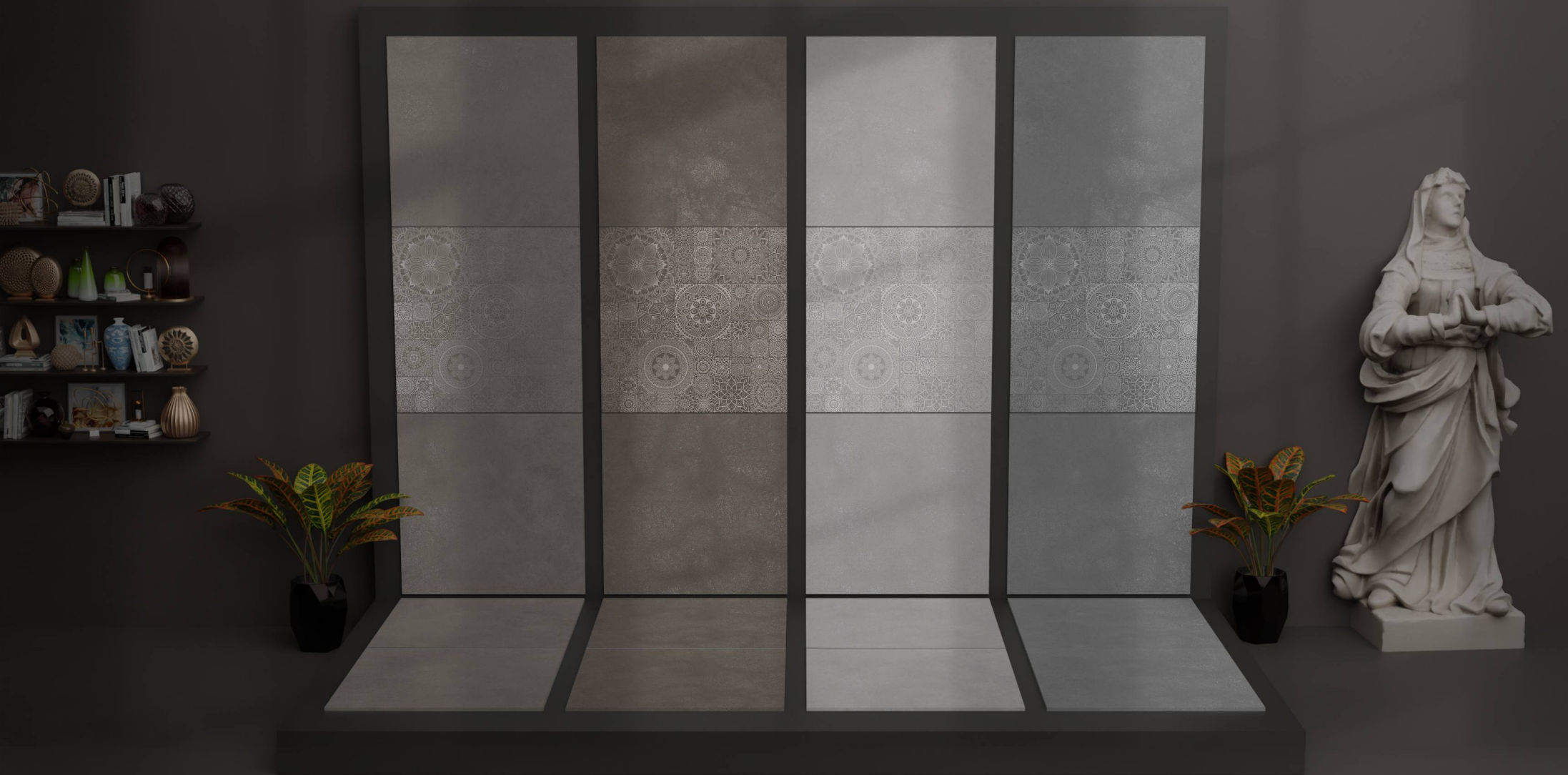
#10 Years
#Of Excellence

**We are manufacturers and exporters of
porcelain tiles as well as slabs (interior and exterior)**

Everyone wants to walk into a home that is both warm and welcoming, without compromising on style and durability. Spentagon is collection of wood effect floor coverings, all beautifully replicated to give the appearance of natural textures to enhance your home's interior. Drawing inspiration from various wood species finishes, including rustic reclaimed planks to smooth contemporary tiles, Spentagon has a design to suit every room in your home.

12+ SURFACE

100%
WATER PROOF



Capture the intricate details of a single tile or a small section. Highlight the vibrant colors, patterns, and textures.

12+ SURFACE

100%
WATER PROOF

Long Lifespan

if properly installed and maintained, porcelain tiles has the ability to last for decades of recommended use.

Aesthetically Pleasing

We have different colors, shapes, and styles of flooring to help match the aesthetic appeal of our customers.

Hygiene

The surface of ceramic and porcelain tiles does not easily retain antigens or allergens, not do they absorb fumes, odors or smoke.

Less Staining

porcelain tiles is less absorbent, therefore you won't experience any staining in the event of spilled drinks, food, or chemicals.



Fire Resistant

Our tiles are non-combustible and will not burn, melt, or give off toxic fumes when it is exposed to fire.



Water Proof

Our tiles are impervious to liquids. Their colours won't fade even if spills and puddles sit for a long while on your floors or surfaces.



Scratch Resistant

Our tiles are scratch-resistant which means that they will continue to look naturally amazing even after years of heavy traffic.



Impact Resistant

Our tiles have good strength and therefore, can withstand intense force or shock applied at the surface.



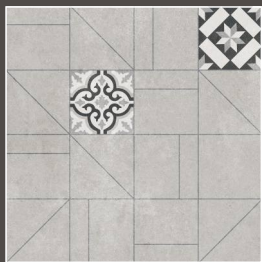
Stain Resistant

Because of its low porosity, vitrified tiles do not stain easily. Even coffee, wine, and the muddiest messes cannot deteriorate it.

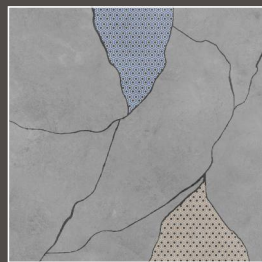


Simpliclean

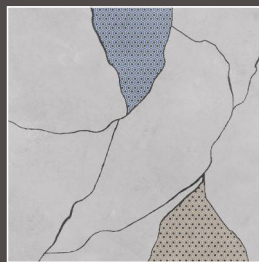
All tiles are easy to clean with a broom, vacuum, or wet mop. Our tiles are easier to clean and maintain.



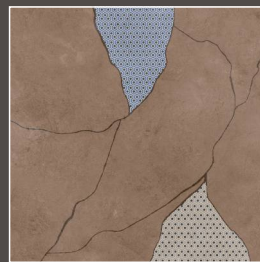
401



402



403



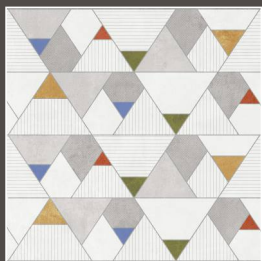
404



405



406



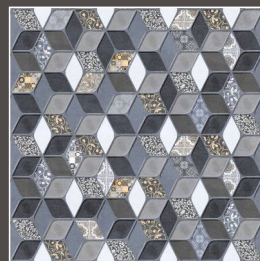
407



408



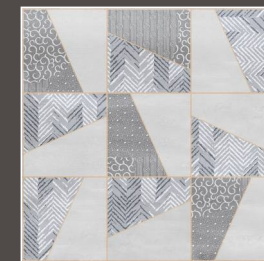
409



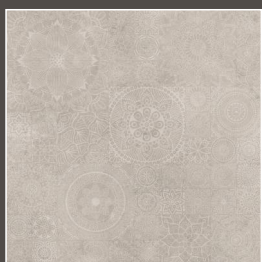
410



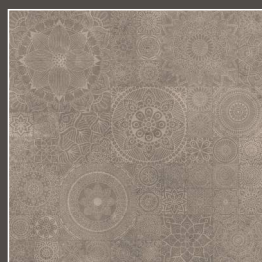
411



412



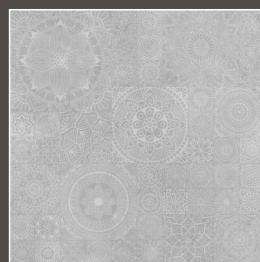
413



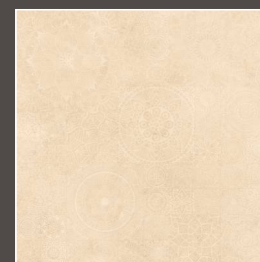
414



415



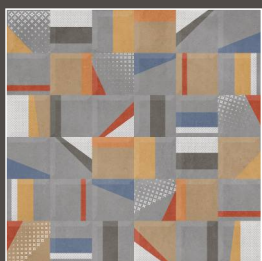
416



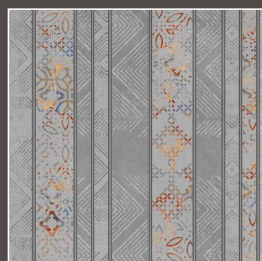
418



419



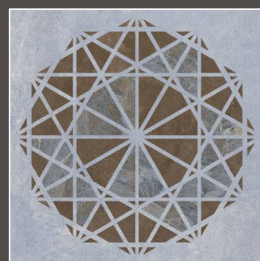
420



423



424



425

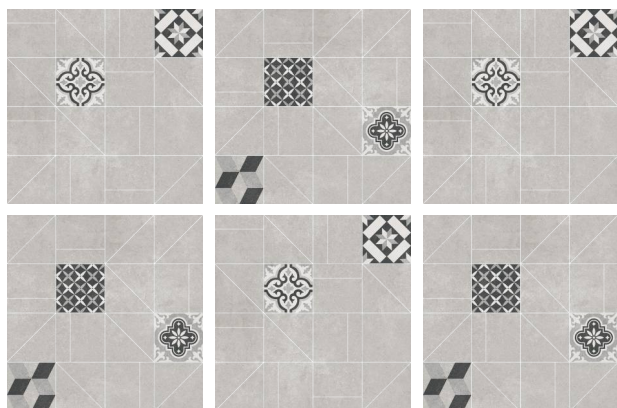
600x600mm | Carving Moroccan



401



401 HL



RANDOM HL

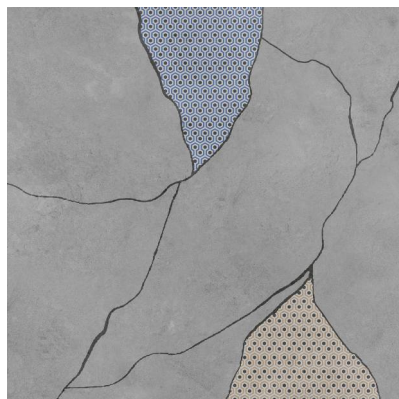
60x
60cm



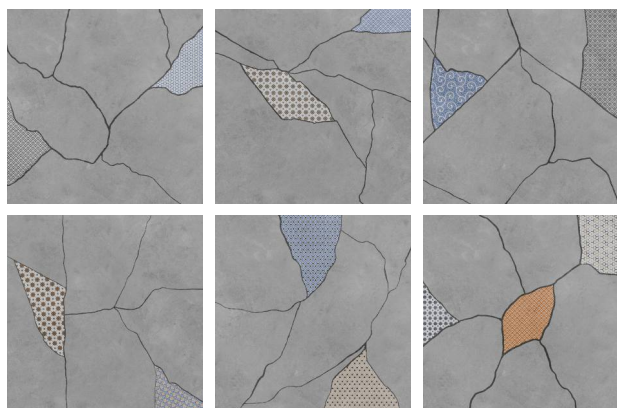
600x600mm | Carving Moroccan



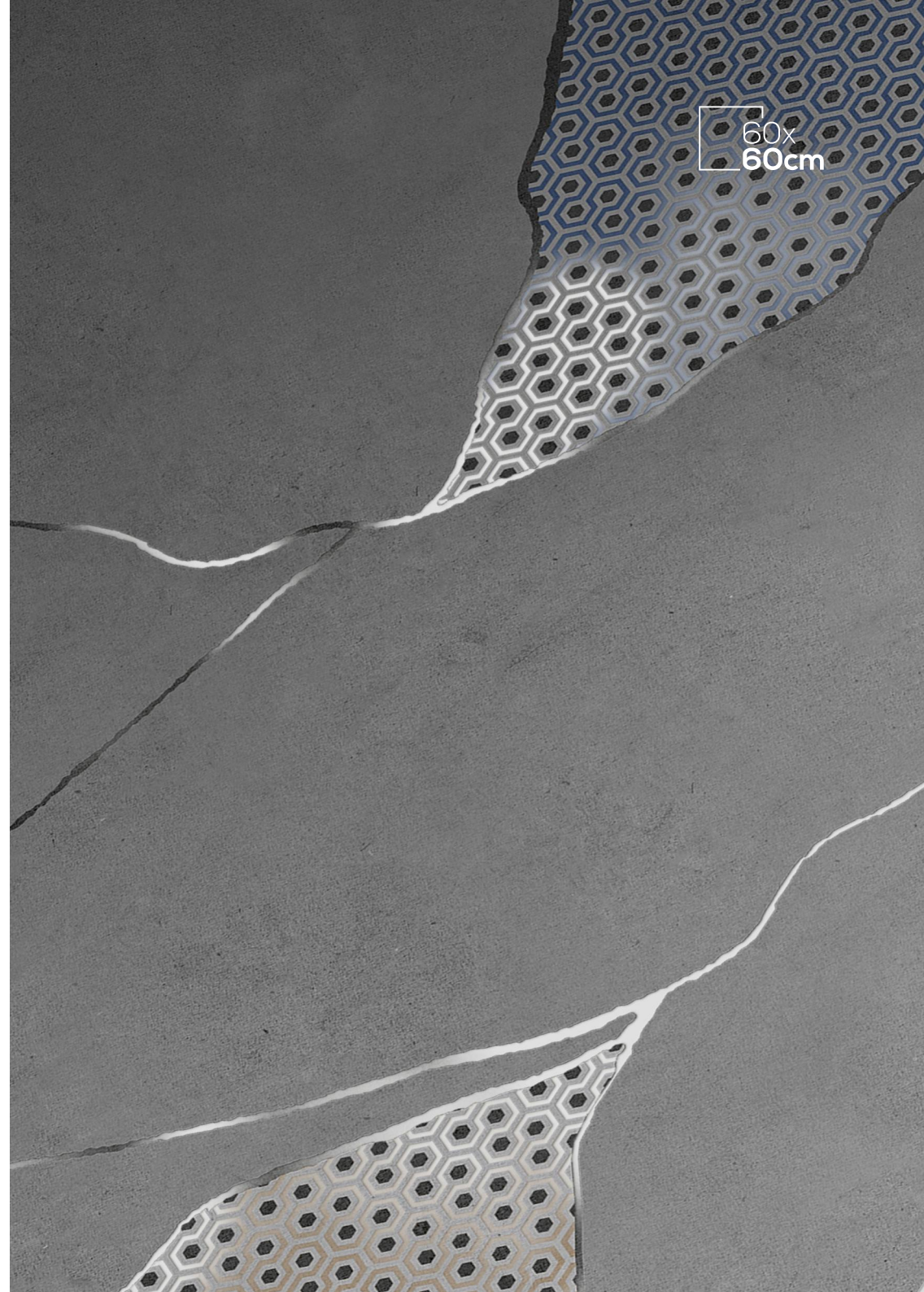
402



402 HL



RANDOM HL



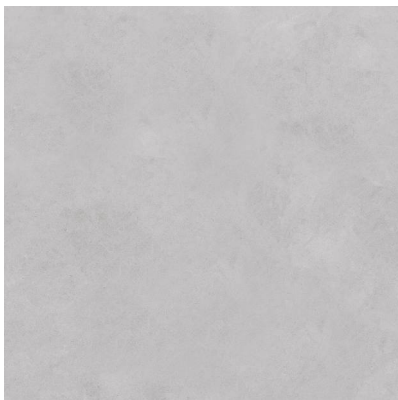


402

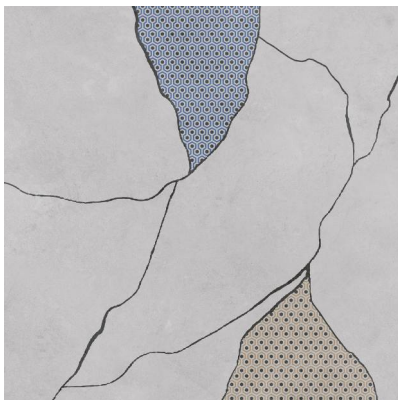
12+ SURFACE

100%
WATER PROOF

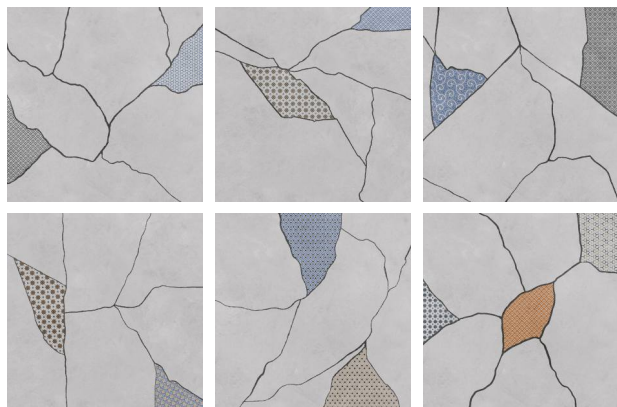
600x600mm | Carving Moroccan



403



403 HL



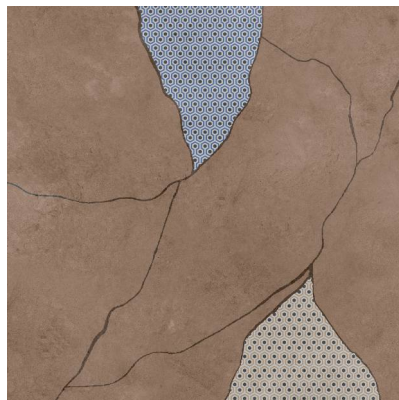
RANDOM HL



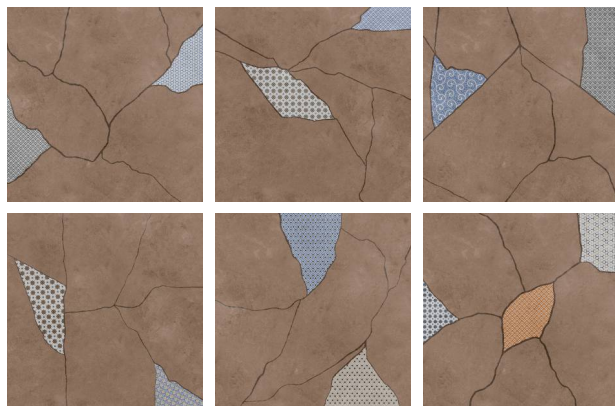
600x600mm | Carving Moroccan



404



404 HL



RANDOM HL



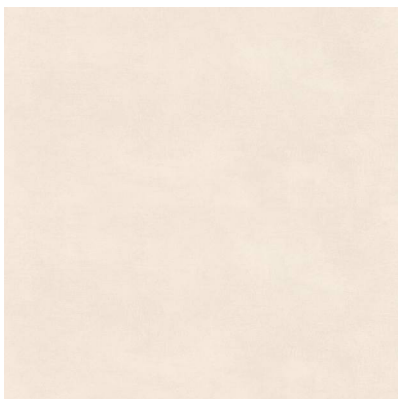


404

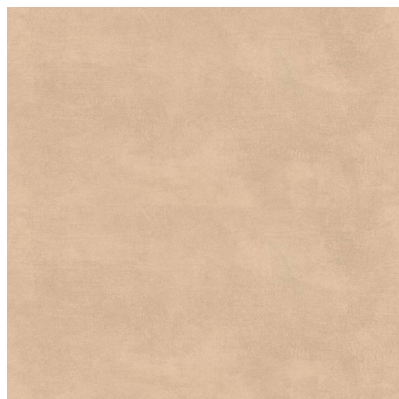
12+ SURFACE

100%
WATER PROOF

600x600mm | Carving Moroccan



405 L



405 D



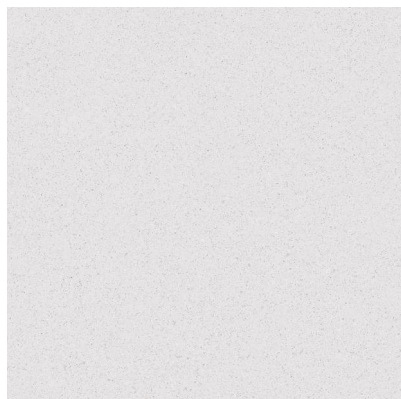
405 HL



405 HL



600x600mm | Carving Moroccan



406 L



406 D



406 HL



406 HL





406

12+ SURFACE 100%
WATER PROOF

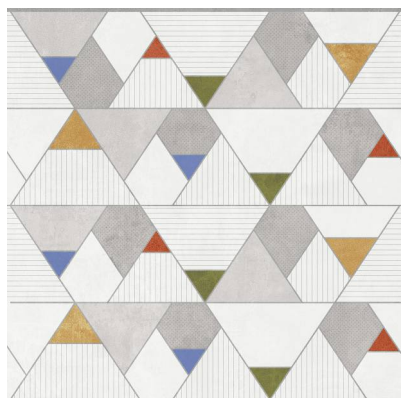
600x600mm | Carving Moroccan



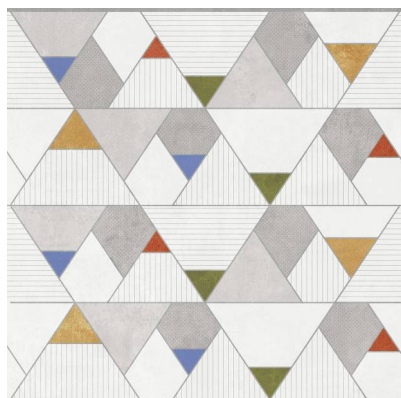
407 L



407 D



407 HL



407 HL



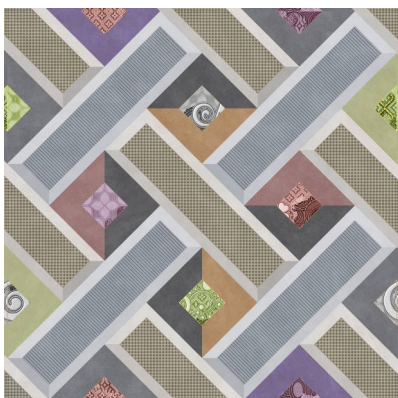
600x600mm | Carving Moroccan



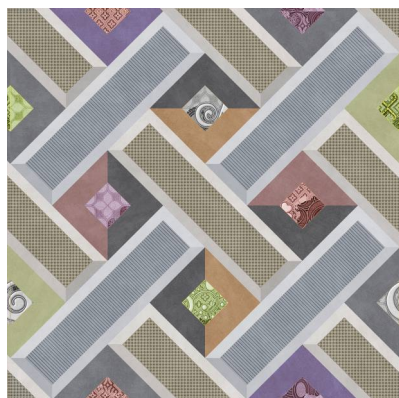
408 L



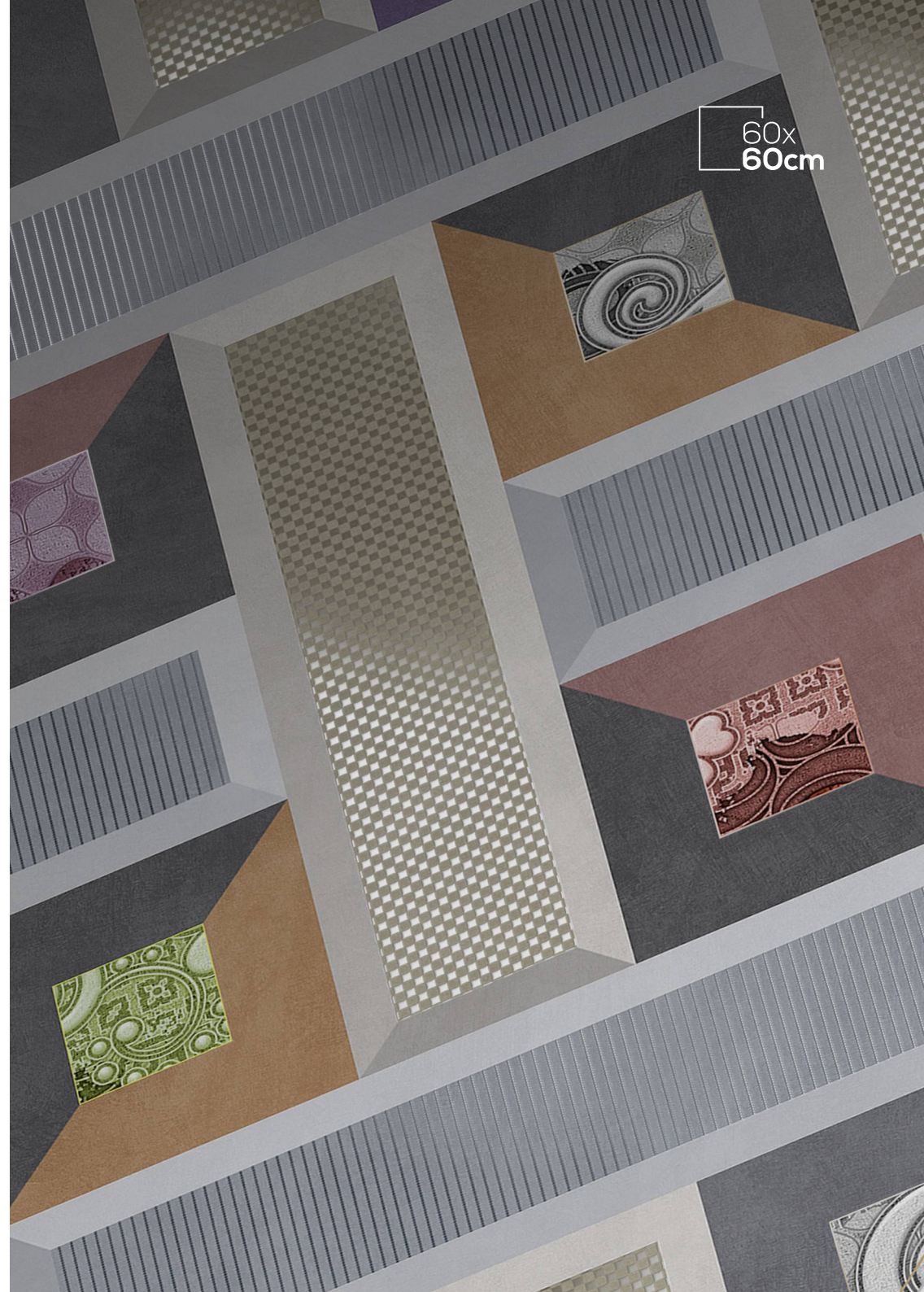
408 D



408 HL



408 HL





408

12+ SURFACE

100%
WATER PROOF

600x600mm | Carving Moroccan



409 L



409 D



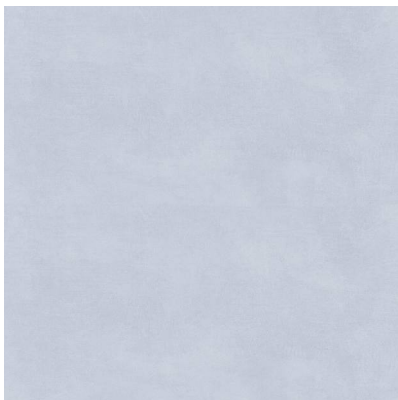
409 HL



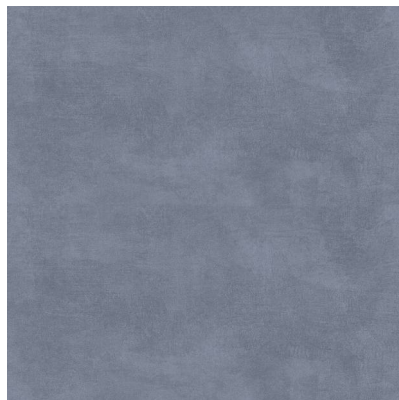
409 HL



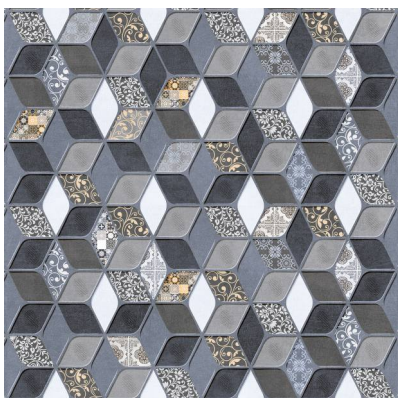
600x600mm | Carving Moroccan



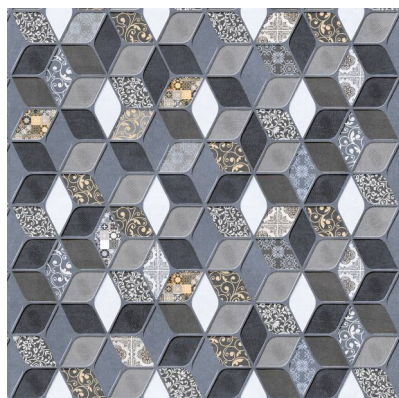
410 L



410 D



410 HL



410 HL



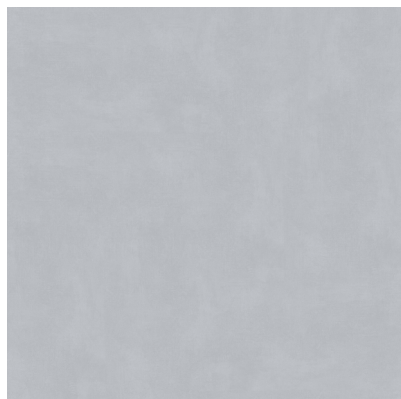


410

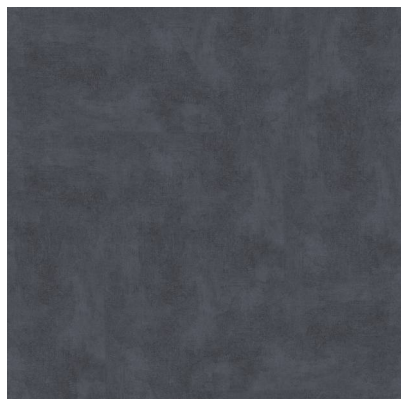
12+ SURFACE

100%
WATER PROOF

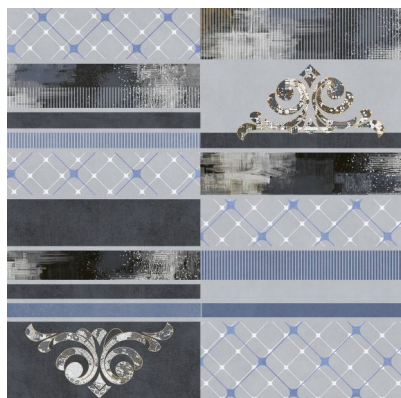
600x600mm | Carving Moroccan



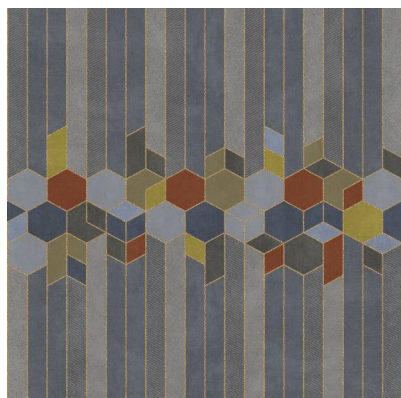
411 L



411 D



411 HL1



411 HL2



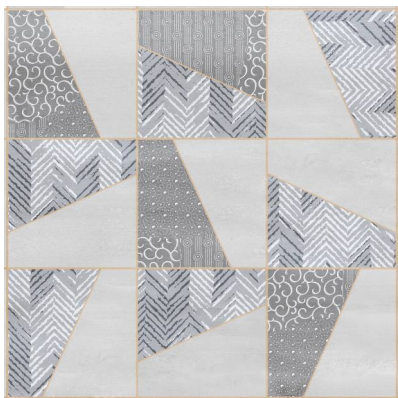
600x600mm | Carving Moroccan



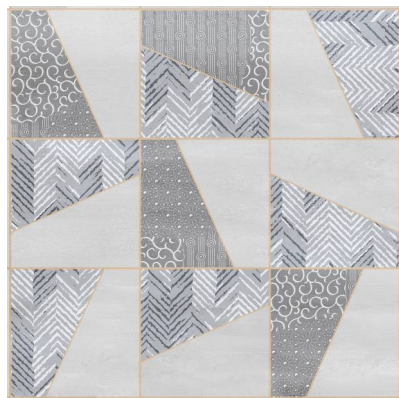
412 L



412 D



412 HL



412 HL





412

12+ SURFACE

100%
WATER PROOF

600x600mm | Carving Moroccan



413 D



413 D



413 HL



413 HL



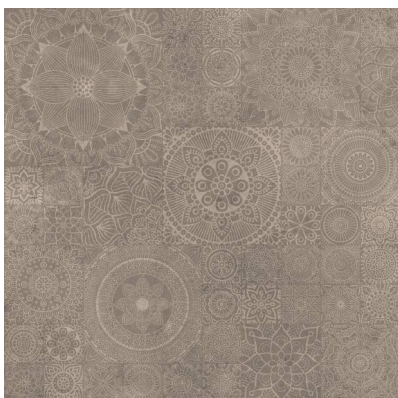
600x600mm | Carving Moroccan



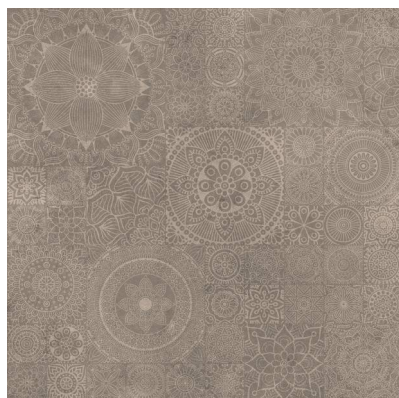
414 D



414 D



414 HL



414 HL



414

12+ SURFACE

100%
WATER PROOF

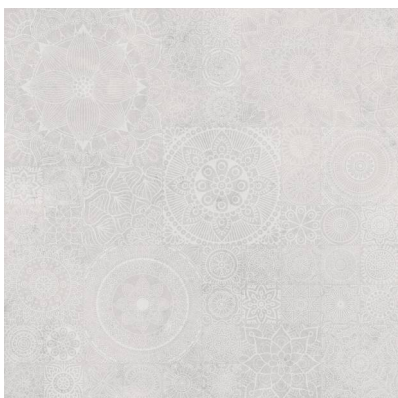
600x600mm | Carving Moroccan



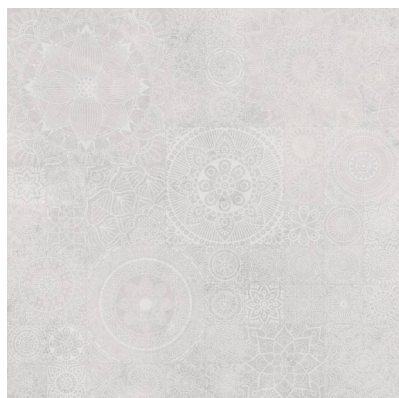
415 D



415 D

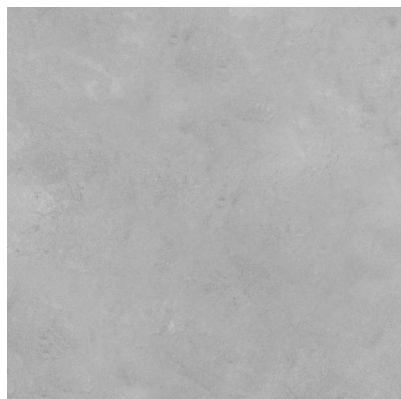


415 HL

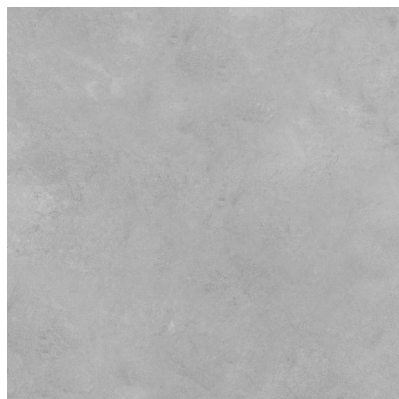


415 HL

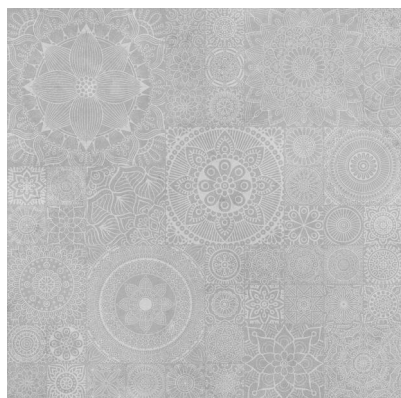
600x600mm | Carving Moroccan



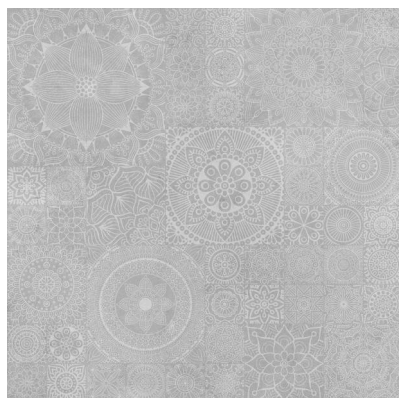
416 D



416 D



416 HL



416 HL





416

12+ SURFACE

100%
WATER PROOF

600x600mm | Carving Moroccan



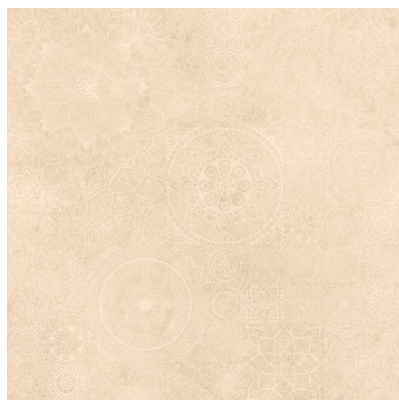
418 D



418 D



418 HL



418 HL





418

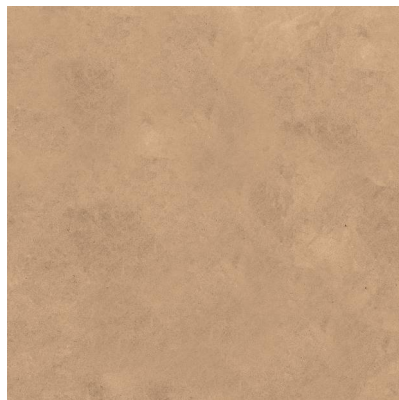
12+ SURFACE

100%
WATER PROOF

600x600mm | Carving Moroccan



419 D



419 D



419 HL



419 HL



600x600mm | Carving Moroccan



420 L



420 D



420 HL



420 HL





420

12+ SURFACE

100%
WATER PROOF

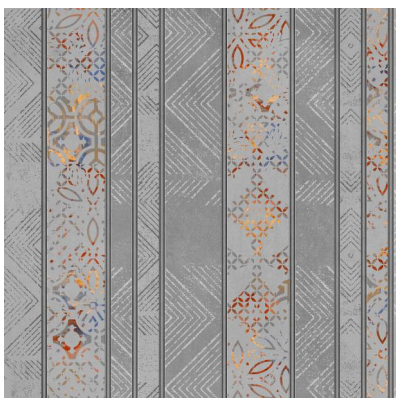
600x600mm | Carving Moroccan



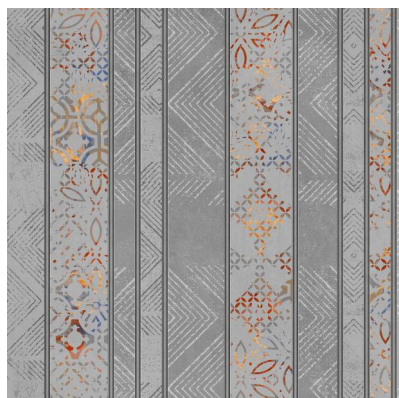
423 L



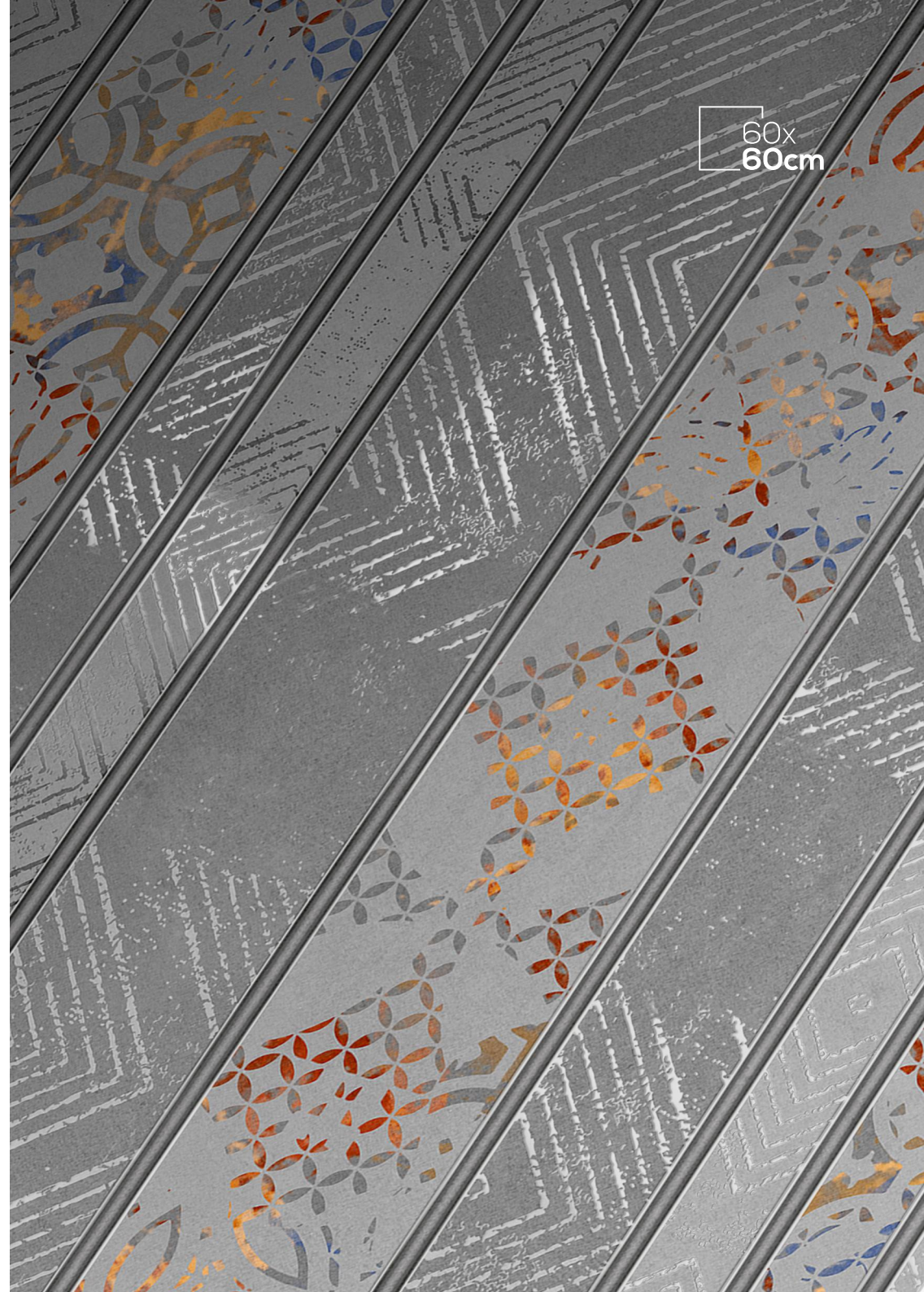
423 D



423 HL



423 HL



600x600mm | Carving Moroccan



424 D



424 D



424 HL



424 HL





424

12+ SURFACE

100%
WATER PROOF

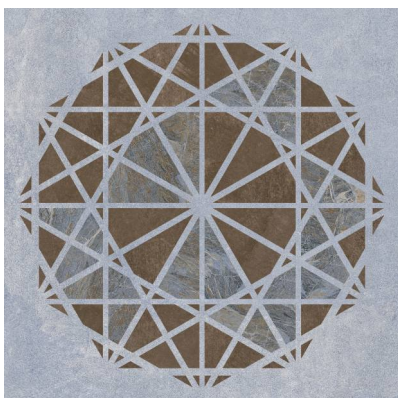
600x600mm | Carving Moroccan



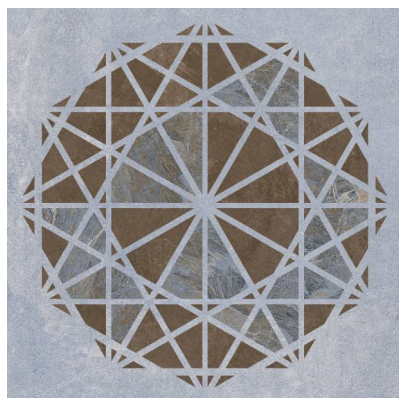
425 L



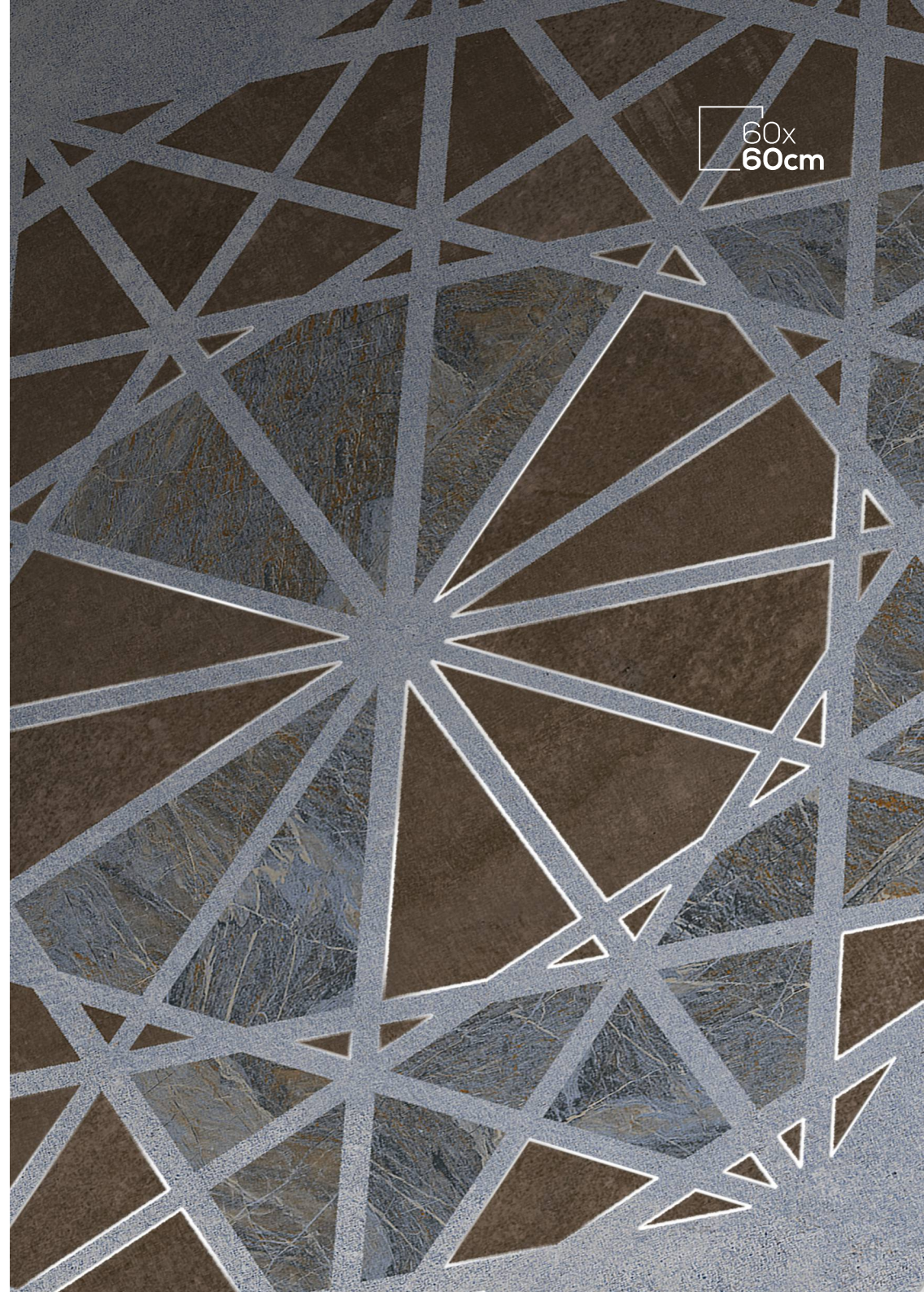
425 L



425 HL



425 HL





Delivering Your Dreams...

**Jetpar Road, Near Riga Ceramic,
Rangpar, Virat Nagar, Morbi - 363 64**

Call : +91 99786 18005 | +91 87587 77774

E-Mail : info@spentagonceramic.com

www.spentagonceramic.com